

DOOR OPENING

1 3/4" THICK DOOR  
(MINIMUM)  
(BY G.C.)

**NOTE: 3" MAXIMUM IN ACCORDANCE WITH  
ASME A17.1 SAFETY CODE FOR  
ELEVATORS. (NO DEVIATIONS)**

**"MUST HOLD" 2 1/4"  
DOOR SET BACK  
SHAFT SIDE**


FIN. FLOOR

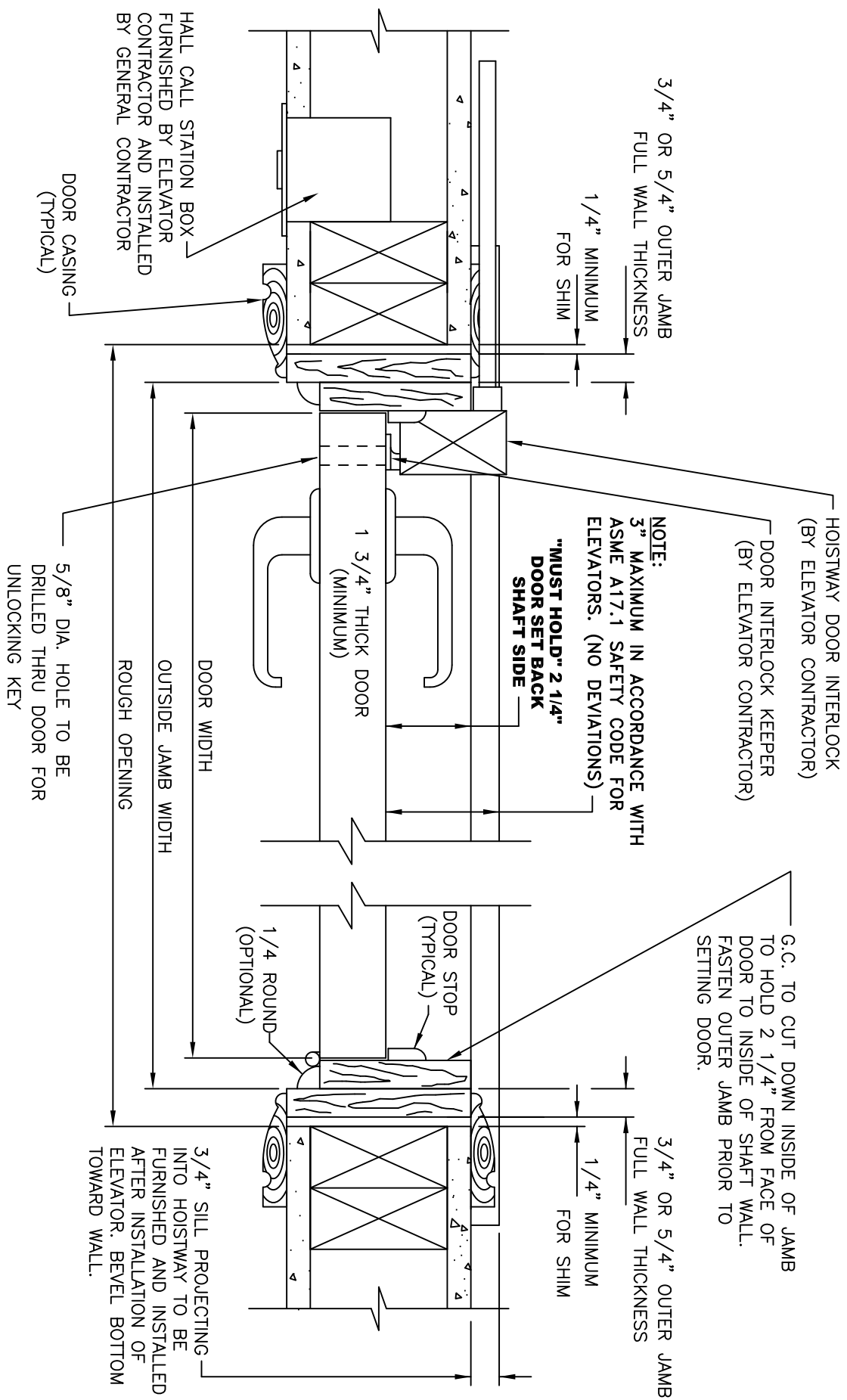
3/4" SILL PROJECTING  
INTO HOISTWAY  
(BY GENERAL CONTRACTOR)

**HOISTWAY DOOR & FRAME DETAIL FOR  
ASME A17.1 CODE COMPLIANT RESIDENTIAL  
ELEVATOR APPLICATIONS**

**SECTION A-A**

**R.E.A.L. Elevator Solutions, Inc.**  
 P.O. Box 30544  
 Raleigh, NC 27622  
 Toll Free: 866-550-REAL  
 Fax: 919-788-7633  
 sales@realelevators.com  
**ROPED HYDRAULIC  
RESIDENTIAL ELEVATOR**





TYPICAL STUD AND SHEETROCK  
WALL CONSTRUCTION SHOWN  
(BY G.C.)

LEFT HAND SHOWN  
RIGHT HAND OPPOSITE

**SECTION B-B**

**HOISTWAY DOOR & FRAME DETAIL FOR  
ASME A17.1 CODE COMPLIANT RESIDENTIAL  
ELEVATOR APPLICATIONS**

**REAL**  
Elevator Solutions, Inc.  
Residential Elevators & Accessibility Lifts

P.O. Box 30544  
Raleigh, NC 27622  
Toll Free: 866-550-REAL  
Fax: 919-788-7633  
sales@realelevators.com

**ROPED HYDRAULIC  
RESIDENTIAL ELEVATOR**



DOOR CASING / TRIM  
(BY G.C.)

HOLE FOR INTERLOCK  
UNLOCKING KEY  
(BY ELEVATOR CONTRACTOR)

1 3/4" DOOR  
MINIMUM  
(BY G.C.)

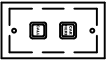
LEFT HAND SHOWN  
RIGHT HAND OPPOSITE



OUTER DOOR JAMB  
(BY G.C.)

DOOR JAMB  
(BY G.C.)

DOOR HINGES (3) MINIMUM  
SPRING LOADED SUGGESTED  
(BY G.C.)



**HOISTWAY DOOR & FRAME DETAIL FOR  
ASME A17.1 CODE COMPLIANT RESIDENTIAL  
ELEVATOR APPLICATIONS**



**Elevator Solutions, Inc.**  
Residential Elevators & Accessibility Lifts

**R.E.A.L. Elevator Solutions, Inc.**

P.O. Box 30544

Raleigh, NC 27622

Toll Free: 866-550-REAL

Fax: 919-788-7633

sales@realelevators.com

**ROPED HYDRAULIC  
RESIDENTIAL ELEVATOR**